

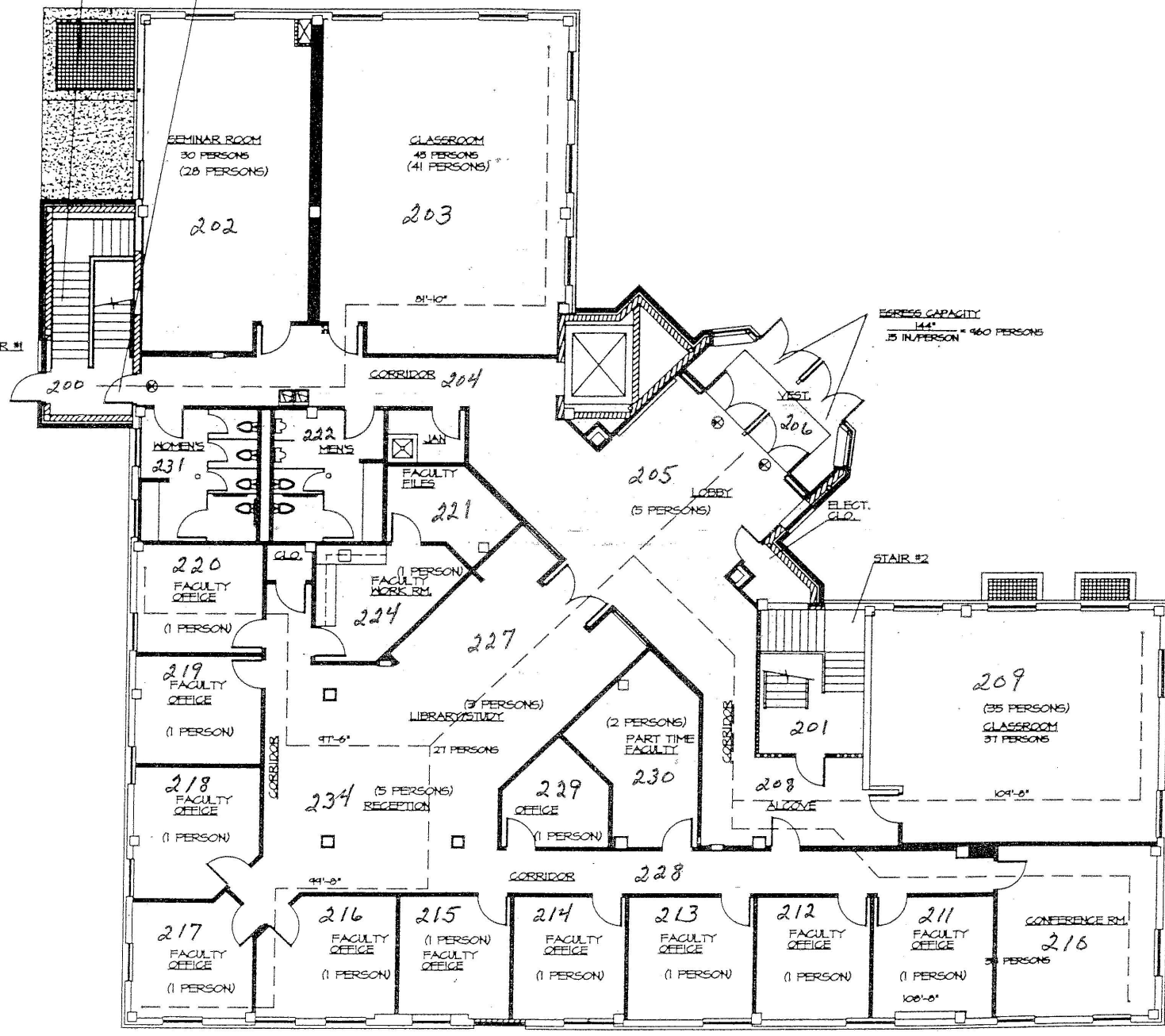
EGRESS CAPACITY @ STAIRWAY
 $\frac{42"}{2 \text{ IN/PERSON}} = 210 \text{ PERSONS}$

EGRESS CAPACITY @ DOORWAY
 $\frac{36"}{15 \text{ IN/PERSON}} = 240 \text{ PERSONS}$

EGRESS CAPACITY
 $\frac{144"}{15 \text{ IN/PERSON}} = 960 \text{ PERSONS}$

STAIR #1

STAIR #2



R.W. CORNS BUILDING

SECOND FLOOR
 SCALE: 1/16" = 1'-0"

TOTAL OCCUPANT LOAD THIS FLOOR: 172



